

RECOMMENDED P.C.B. LAYOUT
TOLERANCE UNSPECIFIED ± 0.05 mm

1. Material:

Insert Molding: LCP UL 94V-0 Black
Contact: Copper alloy, $T=0.20$ mm
Shell: Stainless Steel, $T=0.30$ mm

2. Electrical

- 1.1. Rated Voltage: 30V AC/DC maximum
- 1.2. CURRENT RATING: 5A FOR VBUS, 1.25A FOR GND PIN, 0.25A FOR OTHER.
- 1.3. INSULATION RESISTANCE: 100M Ω MIN
- 1.4. CONTACT RESISTANCE: 50m Ω MAX

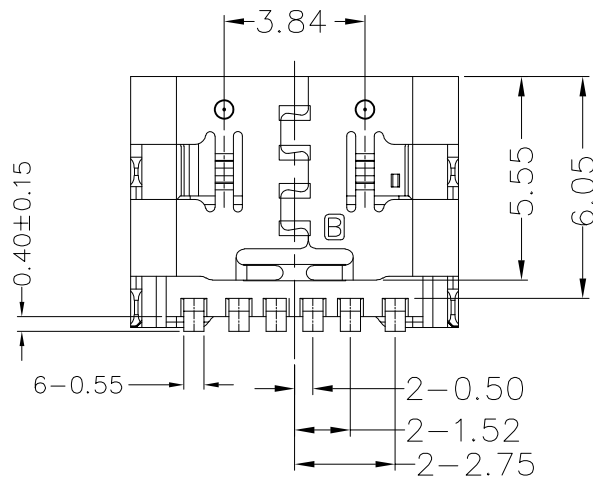
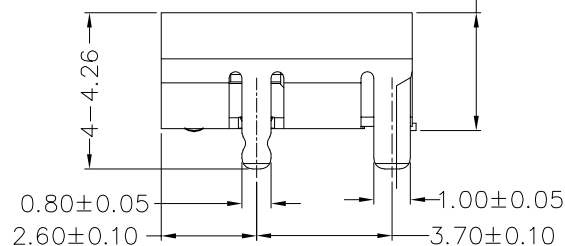
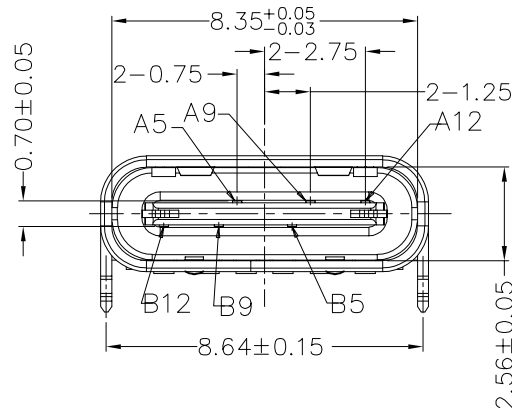
3. Mechanical

- 2.3. INSERT FORCE: 5~20N;
- 2.3. EXTRACT FORCE: INITIAL 8~20N, AFTER 10000 CYCLES 6~20N;
- 2.3. DURABILITY: 10000 CYCLES

4. Plating

- 4.1. Terminal: Contact area: 1u" gold plate over 50u" NI min. Solder area: 100u" pure TIN plate over 50u" NI min.
- 4.2. Shell : Ni: 100u" min.

5. Ambient Temperature: -55°C To +85°C



B12	GND
B9	VBUS
B5	CC2
A5	CC1
A9	VBUS
A12	GND
PIN	SIGNAL NAME

X. ± 0.30	APPD:
.X ± 0.25	
.XX ± 0.20	CHKD:
.XXX \pm	
X' $\pm 1'$	DR: LIN YUN
.X' $\pm 0.5'$	

深圳市创勤科技有限公司
SHENZHEN CHUANGQIN TECHNOLOGY CO., LTD.

TITLE: USB C TYPE 6P母座带弹片

UNITS: mm	SCALE: 1:1
-----------	------------

DWG NO: CQ036-TFBS0668532
REV: B

REV	DESCRIPTION	DATE
B	下配合面增加卡点, 防止主体松动	2019/06/26
A	初版发行	2017/09/13