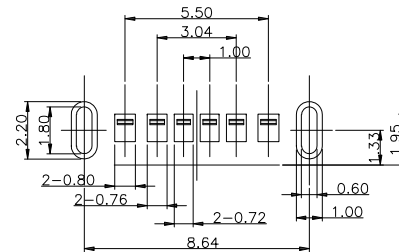
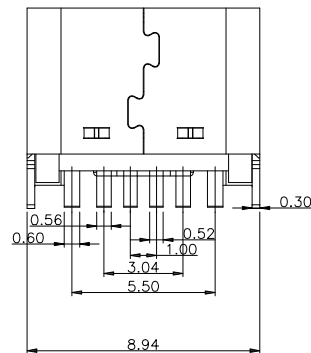
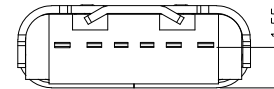
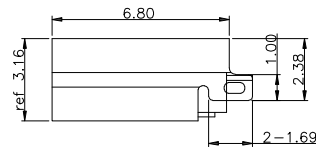
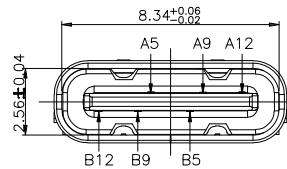
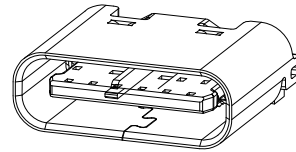
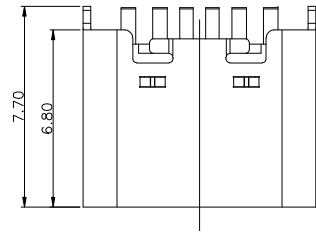


| REV | LTR | DESCRIPTION  | DATE     | APPROVED |
|-----|-----|--------------|----------|----------|
| A0  |     | 依新料号编码原则发行图面 | 20160406 |          |



RECOMMENDED P.C.B. LAYOUT  
TOLERANCE UNSPECIFIED ±0.05mm

NOTE:

- MATERIAL SPECIFICATION:
  - HOUSING: HIGH TEMPERATURE RESISTANT PLASTIC, UL94 V-0.
  - CONTACTS: COPPER ALLOY
  - MID PLATE: STAINLESS STEEL
  - FRONT SHELL: STAINLESS STEEL
- PLATING SPECIFICATION:
  - CONTACTS:
    - Ni 50u" MIN. UNDER PLATED OVER ALL.
    - Au PLATED ON THE FUNCTIONAL AREA OF CONTACT. (GOLD PLATING THICKNESS FOLLOW THE P/N)
  - FRONT SHELL: SEE TABLE 1.
  - SHIELD PLATE & EMI PLATE: CLEAR ONLY
- MECHANICAL PERFORMANCE,
  - INSERTION FORCE: 0.5~2.0kgf.
  - REMOVAL FORCE: 0.8kgf~2.0kgf.
  - DURABILITY: 5000 CYCLES.
- ELECTRICAL PERFORMANCE,
  - CURRENT RATING: 3.0A  
VOLTAGE RATING: 5.0V
  - LLCR:
    - VBUS & GND PINS AND OTHER PINS: 40mΩ/PIN MAX.
    - SHIELD: 50mΩ/MAX.
    - LLCR MAX. CHANGE OF ALL PINS: 10mΩ.
  - INSULATION RESISTANCE: 100MΩ MIN
  - DIELECTRIC WITHSTAND VOLTAGE, AC 100V FOR 1 MINUTE.
- ENVIRONMENTAL PERFORMANCE:
  - OPERATING TEMPERATURE: -25°C~+85°C.
- IR REFLOW:
  - THE PEAK TEMPERATURE ON THE BOARD SHALL BE MAINTAINED FOR 10 SECONDS AT 260°C.

PIN ASSIGNMENTS

| PIN | SIGNAL NAME | PIN | SIGNAL NAME |
|-----|-------------|-----|-------------|
| A5  | CC1         | B12 | GND         |
| A9  | VBUS        | B9  | VBUS        |
| A12 | GND         | B5  | CC2         |

| TOLERANCE            | NAME (INTENDED USE)<br>CUSTOMER DRAWING | 深圳市创勤电子有限公司<br>SHENZHEN CHUANGQIN ELECTRONICS CO., LTD. |
|----------------------|---|---|
| X.X ±0.30 X.' ±10'   | PART NO.                                | TITLE:<br><b>TYPE C 6P 直插6.8</b>                        |
| .XX ±0.20 .X' ± 8'   | DESIGN: <b>ZHANG</b>                    | DRAWG NO.<br><b>CQ087-TFLC0606801</b>                   |
| .XXX ±0.10 .XX' ± 5' | CHED: <b>LI JY</b>                      | SCALE SHEET REV.<br>SCALE SHEET REV.                    |
| UNITS mm             | APPD: <b>LIN YUN</b>                    |   |